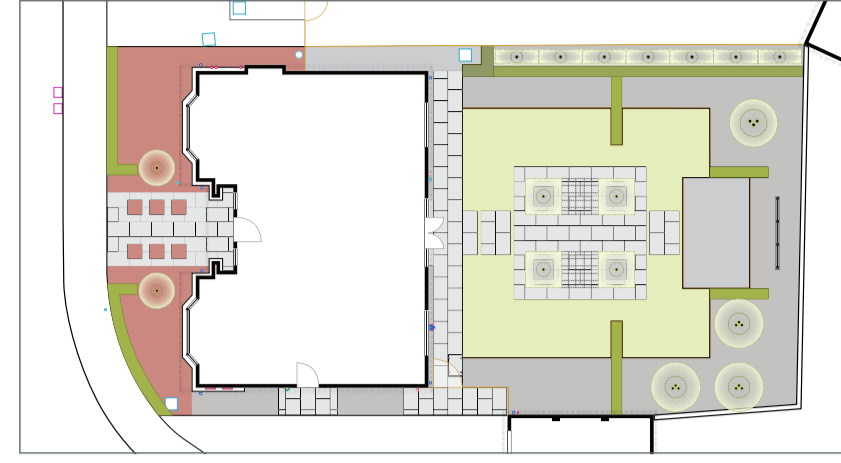


Front Garden



TREES



*Prunus lusitanica* 'Myrtifolia'  
Eventual height: 4.00 m, spread: 2.50 m  
Season of interest: Spring  
Clipped to shape  
Evergreen, RHS Award of garden merit

HEDGING



*Griselinia littoralis*  
Flowering period: May  
Clipped to shape - low hedge  
Evergreen, RHS Award of garden merit

SHRUBS



*Hebe rakaiensis*  
Eventual height: 1.00 m, spread: 1.20 m  
Flowering period: June to July  
RHS Plants for pollinators  
Evergreen, RHS Award of garden merit



*Pittosporum tenuifolium* 'Golf Ball'<sup>TM</sup>  
Eventual height: 1.20 m, spread: 1.20 m  
Flowering period: May to June  
Evergreen

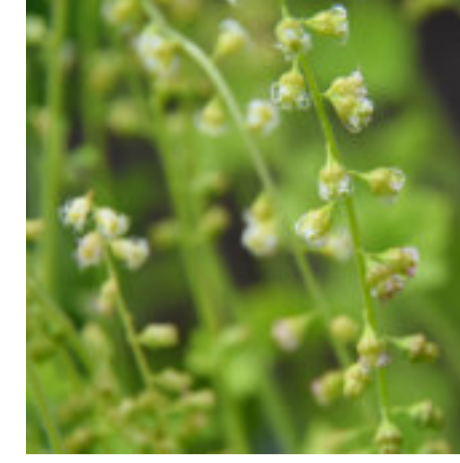


*Sarcococca confusa*  
Eventual height: 2.00 m, spread: 1.00 m  
Flowering period: December to March  
Fragrant, RHS Plants for pollinators  
Evergreen, RHS Award of garden merit



*Hydrangea paniculata* 'Little Lime (Jane)'<sup>TM</sup>  
Eventual height: 1.20 m, spread: 1.20 m  
Flowering period: August to September  
Deciduous

PERENNIALS



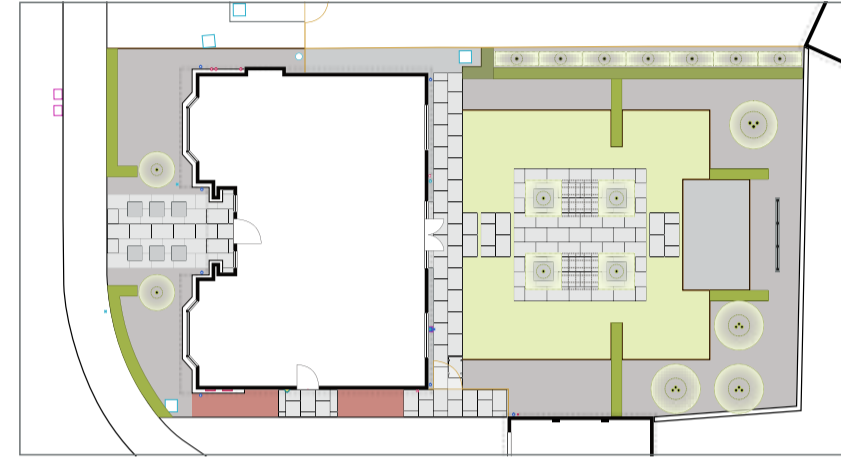
*Tellima grandiflora*  
Eventual height: 0.80 m, spread: 0.30 m  
Flowering period: May to June

BULBS



*Narcissus* 'Thalia' (S)  
Height: 0.40 m, spread: 0.15 m  
Flowering period: March to April

Side Garden



SHRUBS



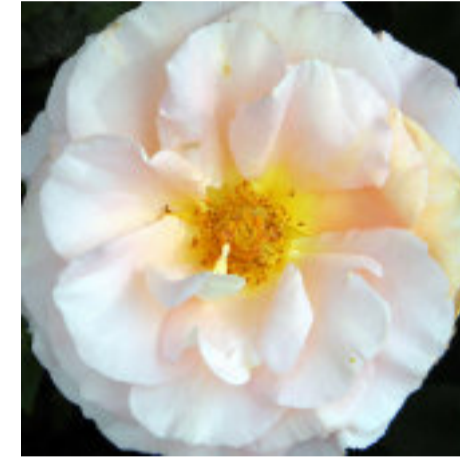
*Trachelospermum jasminoides*  
Eventual height: 6.00 m, spread: 9.00 m  
Flowering period: June to August  
Fragrant  
Evergreen, RHS Award of garden merit



*Lavandula angustifolia* 'Folgate'  
Eventual height: 0.60 m, spread: 0.60 m  
Flowering period: July to August  
Aromatic, RHS Plants for pollinators  
Evergreen, RHS Award of garden merit



*Rosa* A Whiter Shade of Pale  
= 'Peafanfare'<sup>TM</sup> (HT)  
Eventual height: 0.90 m, spread: 0.90 m  
Flowering period: July to September  
Fragrant, RHS Award of garden merit

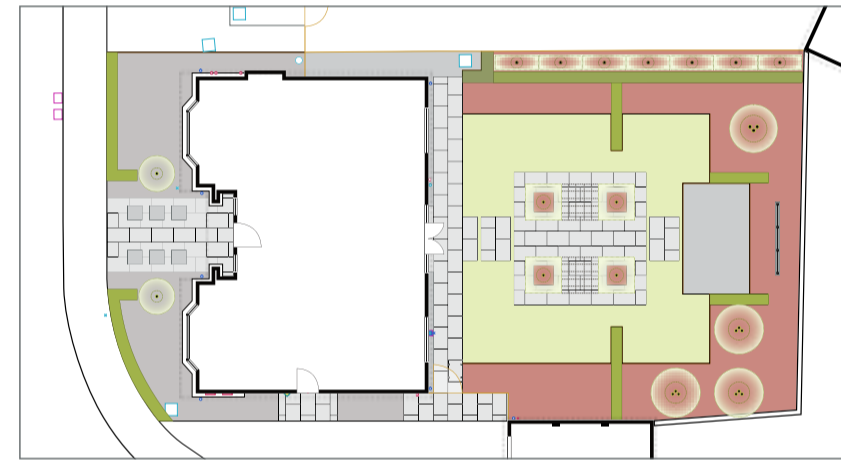


*Rosa* King's Macc = 'Frydisco'<sup>TM</sup> (HT)  
Eventual height: 0.90 m, spread: 0.60 m  
Flowering period: June to September  
Fragrant, RHS Award of garden merit

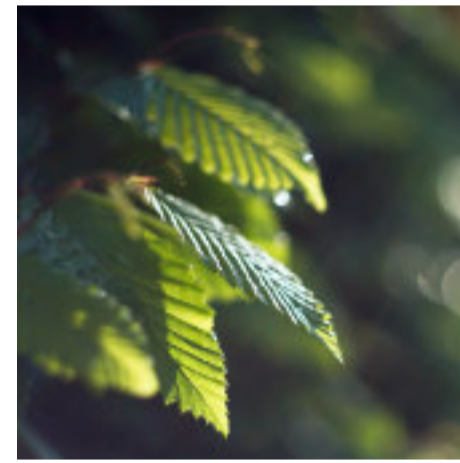


*Rosa* Julia's Rose (HT)  
Eventual height: 0.90 m, spread: 0.60 m  
Flowering period: July to September

Rear Garden



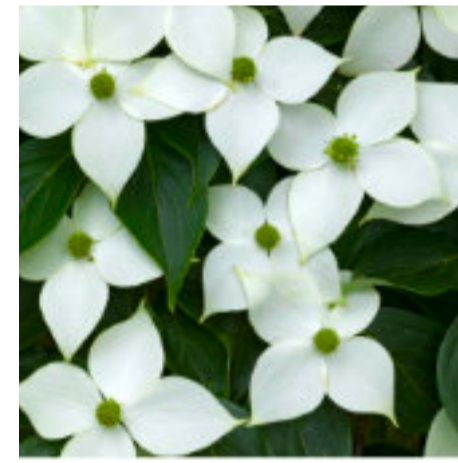
TREES



*Carpinus betulus* - Pleached tree  
Panel size: height 1.50 m, width: 1.80 m  
Clipped to shape  
Deciduous, RHS Award of garden merit



*Morus alba* Fruitless - Parasol tree  
Panel size: 1.50 x 1.50 m  
Clipped to shape  
Deciduous



*Cornus kousa* var. *chinensis* 'China Girl'  
- Multi-stem tree  
Eventual height: 6.00 m, spread: 4.00 m  
Flowering period: May to June  
Deciduous, RHS Award of garden merit



*Osmanthus heterophyllus* - Multi-stem tree  
Eventual height: 4.00 m, spread: 4.00 m  
Flowering period: September to November  
Clipped to shape  
Evergreen

HEDGING



*Carpinus betulus*  
Clipped to shape - low/medium/high hedge  
Deciduous, RHS Award of garden merit



*Euonymus japonicus* 'Green Spire'  
Clipped to shape - low hedge  
Evergreen

SHRUBS



*Hebe rakaiensis*  
Eventual height: 1.00 m, spread: 1.20 m  
Flowering period: June to July  
RHS Plants for pollinators  
Evergreen, RHS Award of garden merit



*Pittosporum tenuifolium* 'Oliver Twist'  
Eventual height: 2.00 m, spread: 1.50 m  
Flowering period: May to June  
Evergreen

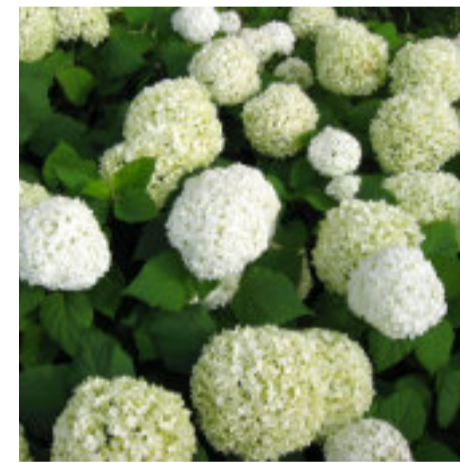


*Pittosporum tenuifolium* 'Golf Ball'<sup>TM</sup>  
Eventual height: 1.20 m, spread: 1.20 m  
Flowering period: May to June  
Evergreen

SHRUBS



*Pittosporum tenuifolium* 'Tom Thumb'  
Eventual height: 1.00 m, spread: 0.60 m  
Flowering period: May to June  
Evergreen, RHS Award of garden merit



*Hydrangea arborescens* 'Strong Annabelle' = 'Abetwo'<sup>TM</sup>  
Eventual height: 1.50 m, spread: 1.50 m  
Flowering period: July to September  
Deciduous

GRASSES



*Calamagrostis* x *acutiflora* 'Karl Foerster'  
Eventual height: 1.80 m, spread: 0.40 m  
Season of interest: Summer, Autumn  
Deciduous, RHS Award of garden merit



*Pennisetum alopecuroides* 'Little Bunny'  
Eventual height: 0.40 m, spread: 0.40 m  
Flowering period: August to September  
Deciduous

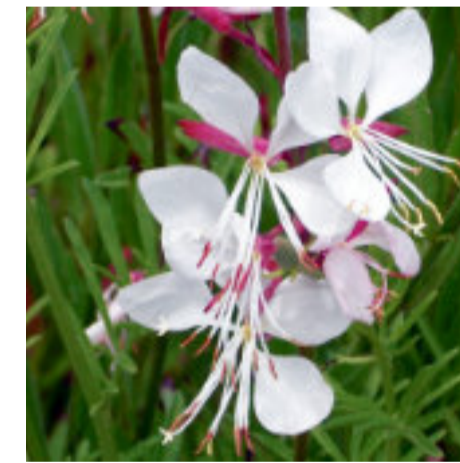


*Hakonechloa macra*  
Eventual height: 0.35 m, spread: 0.40 m  
Flowering period: August to September  
Deciduous, RHS Award of garden merit

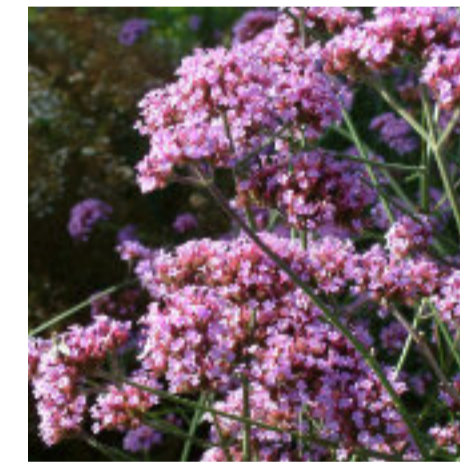
PERENNIALS



*Anemone* x *hybrida* 'Whirlwind'  
Eventual height: 0.90 m, spread: 0.75 m  
Flowering period: August to September



*Oenothera lindheimeri* 'Whirling Butterflies' (G)  
Eventual height: 0.75 m, spread: 0.45 m  
Flowering period: May to September  
RHS Plants for pollinators



*Verbena bonariensis* 'Lollipop'<sup>TM</sup>  
Eventual height: 0.60 m, spread: 0.60 m  
Flowering period: June to September  
RHS Plants for pollinators

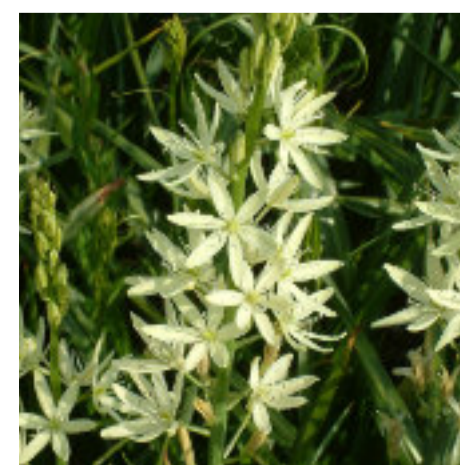


*Verbena bonariensis*  
Eventual height: 2.00 m, spread: 0.45 m  
Flowering period: June to September  
RHS Plants for pollinators  
RHS Award of garden merit

BULBS



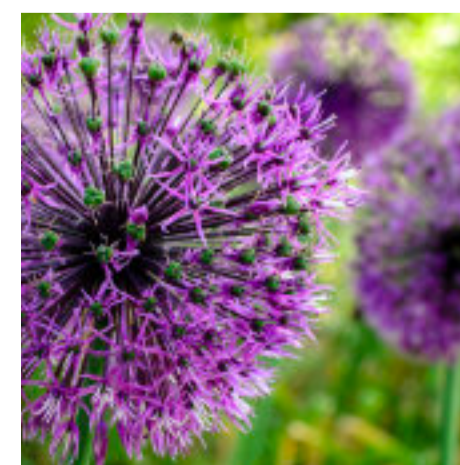
*Narcissus* 'Thalia' (S)  
Height: 0.40 m, spread: 0.15 m  
Flowering period: March to April



*Camassia leichtlinii* 'Alba'  
Height: 0.90 m, spread: 0.20 m  
Flowering period: April to May



*Allium nigrum*  
Height: 0.75 m, spread: 0.30 m  
Flowering period: June  
RHS Plants for pollinators



*Allium jesdianum* 'Early Emperor'  
Height: 0.90 m, spread: 0.30 m  
Flowering period: May  
RHS Plants for pollinators  
RHS Award of garden merit



Nettles & Petals Design  
Rhoander, Old Compton Lane,  
Farnham, Surrey, GU9 8EG  
  
Liz Frost  
07879 645107  
liz@nettlesandpetalsdesign.co.uk  
  
Darren Lincoln  
07545 017741  
darren@nettlesandpetalsdesign.co.uk

CLIENT	XXXX XXXXXXXX X XXXX XXXXXXXX
PROJECT	XX XXXXXXX XXXX
LOCATION	XX XXXXXXX XXXX, XXXXXXX, XXXXXXX, XXXXXXX, XXXX XXXX
DRAWING TITLE	Planting Design
DATE	Thursday 19th August 2021
SCALE	@ A1
DESIGNED BY	Darren Lincoln
NUMBER	LS6.05.01
REVISION	R0
These drawings are copyright © 2021	